

FURUNO

Model

FI-70

INSTRUMENT / DATA ORGANIZER



www.furuno.com

All your info... All in one, for powerboats and sailboats alike

The new FI-70 INSTRUMENT/DATA ORGANIZER sports a vibrant 4.1" bonded color display that is visible even in the harshest sunlight conditions. Utilizing the CAN bus network, external sensors can easily be connected for simple and reliable operation. The FI-70 features an easy to operate graphical user-interface. It allows you to customize almost every display property, allowing you to choose the information you want to be displayed, in the way you want to see it!



- ▶ Clear 4.1" QVGA screen that is viewable even under direct sunlight
- ▶ Simple and intuitive graphical user interface allows you to fully customize
- ▶ Designed to perfectly match the NavNet TZtouch/TZtouch2 on your helm
- ▶ Bonded color LCD ensuring condensation free operation as well as great visibility
- ▶ Use your existing wind sensors (FI-5001/FI-5001L) with the new analog IF-NMEAUI converter
- ▶ Low power consumption (0.15 A max)
- ▶ Simple AIS display through connected CAN bus devices
- ▶ Share language and brilliance settings between FI-70s when grouping them together



Model **FI-70**
INSTRUMENT/DATA ORGANIZER

Simple setup for powerboats and sailboats alike

No matter if you own a powerboat or a sailboat, the FI-70 INSTRUMENT/DATA ORGANIZER will be equally useful with the proper sensors connected. For maximum performance and simple setup, the FI-70 automatically asks you which type of vessel you have, helping to customize operation of the unit. With its low power consumption and easy installation, it's hard to imagine a vessel where the FI-70 wouldn't be a benefit.

Display Data

Speed	STW (Speed Through Water), Max STW, Average STW, SOG (Speed Over Ground), Max SOG, Average SOG, VMG (Velocity made good)	Boat	Rudder Angle, Trim Tabs, Roll/Pitch
Wind	AWS (Apparent Wind Speed), TWS (True Wind Speed), Max TWS, AWA (Apparent Wind Angle), TWA (True Wind Angle), Beaufort Wind, GWD (Ground Wind Direction)	Engine	Engine RPM, Trip Fuel Used, Fuel Rate, Engine Trim/Tilt, Boost Pressure, Engine Temperature, Engine Hour, Oil Pressure, Oil Temperature, Coolant Pressure, Engine Load, Transmission Oil Temperature, Transmission Oil Pressure
Heading	HDG (Heading), Average HDG, Heading on Next Tack, ROT (Rate Of Turn)	Tank	Tank Level 1-6
Course	COG (Course Over Ground)	Depth	Depth
Timer	Count Down Timer 1, Count Down Timer 2, Count Up Timer	AIS	AIS (Max targets: 25, fixed 6NM range)
Navigation	Bearing, RNG (Range), WPT (Position), XTE (Cross-Track Error), Position, ETA Time, ETA Date, Trip, Odometer	Voltage	Supply Voltage
		Environment	Date & Time, Water Temperature, Air Temperature, Atmospheric Pressure, Humidity, Wind Chill Temperature, Dew Point

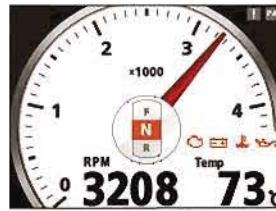
Display Modes



Heading



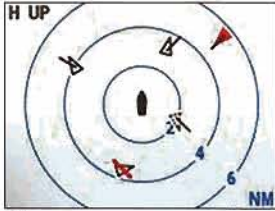
Wind



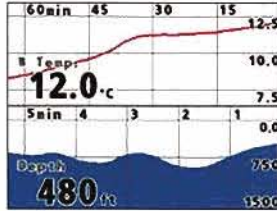
Engine RPM (Single)



Engine RPM (Triple)



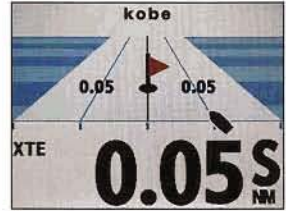
AIS



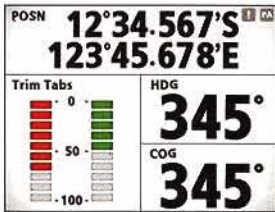
Graph



Timer



Highway



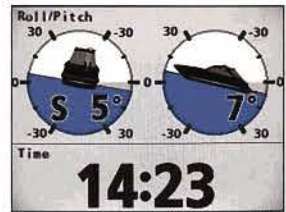
Data Box (Split)



Data Box (Single)

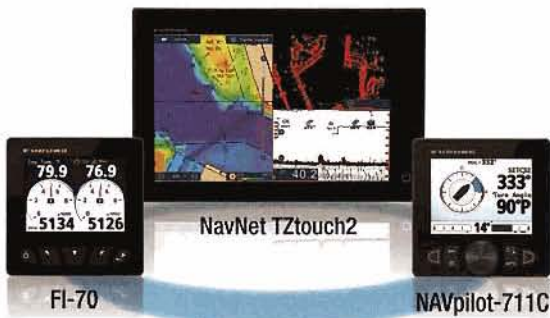


Rudder

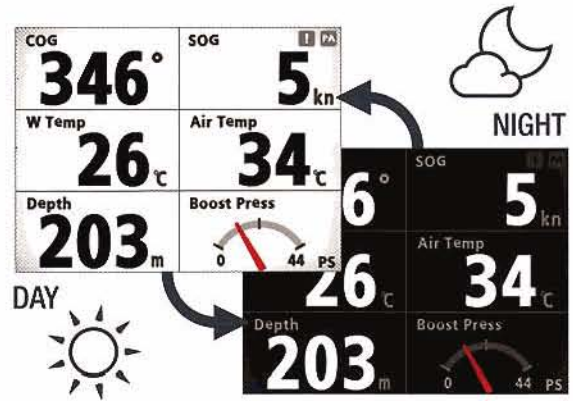


Roll & Pitch

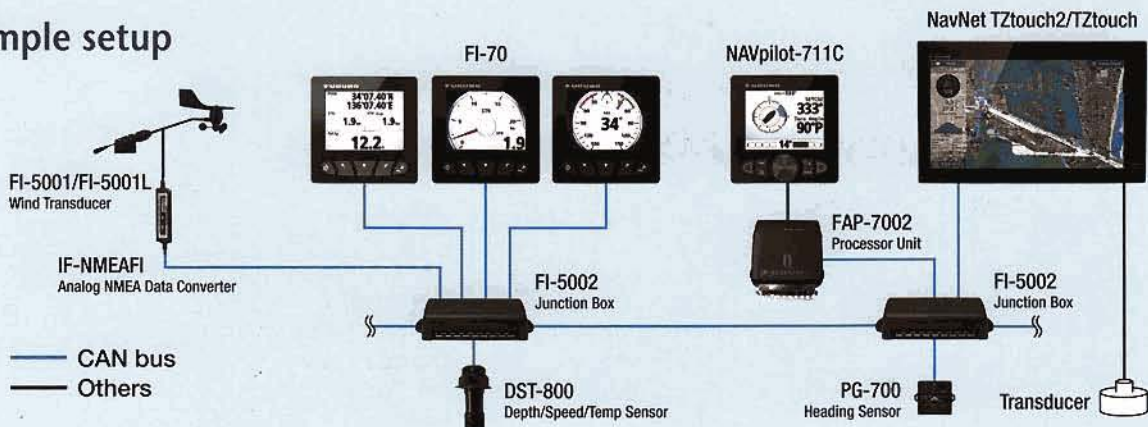
The NavNet TZtouch2, NAVpilot-711C and the FI-70 have been designed to match each other beautifully, both in appearance and in function. Sporting a clean and functional design in all black, the FI-70 fits right in on your helm, together with the NavNet TZtouch2 and NAVpilot-711C.



Day and Night modes are available for less eye strain. With Day and Night mode, losing your night vision is no longer an issue. Simply change between the two modes with a menu setting.



Example setup



SPECIFICATIONS OF

Model **FI-70** INSTRUMENT / DATA ORGANIZER

GENERAL

Screen Size 4.1" Color LCD
Pixel Number 320 (V) x 240 (H) pixels (QVGA)
Brightness Typical 700 cd/m²
Display Mode Analog Meter, Graph, Highway, Race Timer, Simple AIS, Data Box

INTERFACE

Port CAN bus x1
Input (PGN) 059904, 060928, 061184, 126208/720/992/996, 127237/245/250/251/257/258/488/489/493/497/505, 128259/267, 129025/026/029/033/038/039/040/283/284/285/794/809/810, 130306/310/311/312/313/316/576/577/816/821/822/825/880/841
Output (PGN) 059392/904, 060928, 061184, 126208/464/720/993/996, 130816/821/822/823/825/841

POWER SUPPLY

Power Supply 15 VDC through CAN bus
Power Consumption 15 VDC 0.15 A max, LEN3

ENVIRONMENT

Temperature -15 °C to +55 °C
Waterproofing IPX6

EQUIPMENT LIST

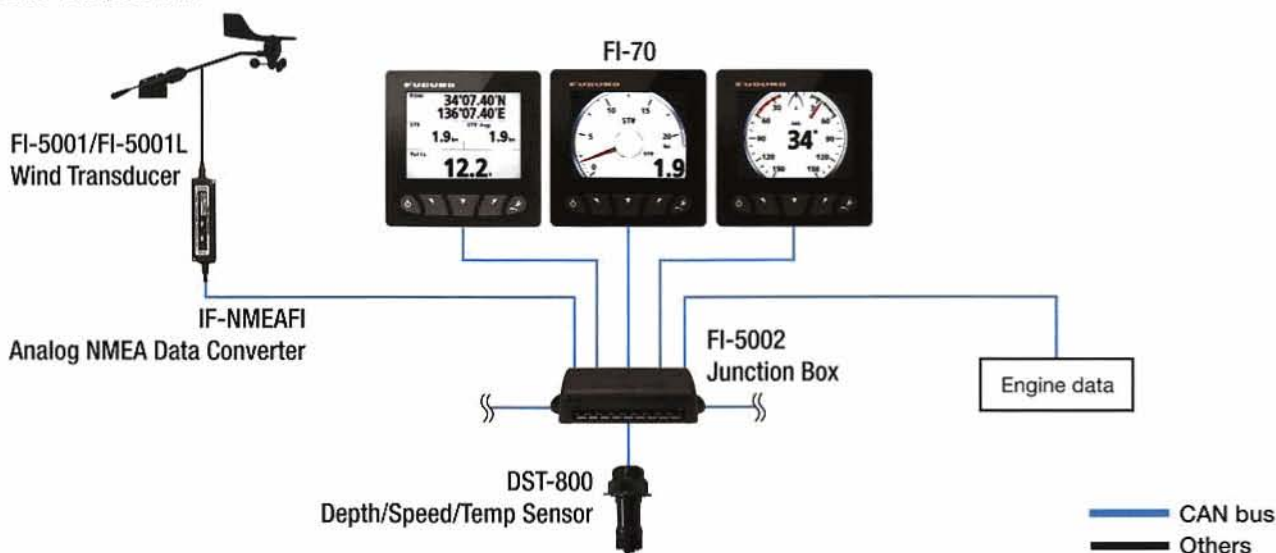
Standard

1. Instrument FI-70 with 6 m cable 1 unit
2. Installation Materials

Option

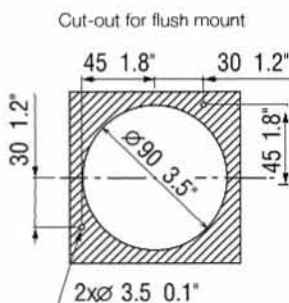
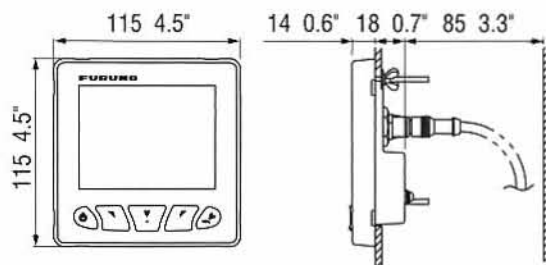
1. Junction Box FI-5002
2. Depth/Speed/Temp Sensor DST-800
3. Wind Transducer FI-5001/FI-5001L
4. Analog NMEA Data Converter IF-NMEAFI
5. Cable Assembly M12-05BM+05BF 1/2/6 m
6. Cable Assembly CB-05PM+05BF 1/2/6 m
7. Frontmount kit OP26-29

CONNECTION DIAGRAM

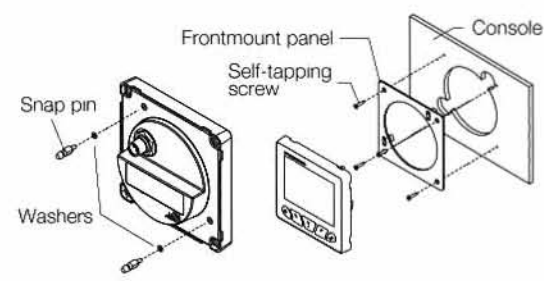


Instrument FI-70

0.22 kg 0.5 lb



Frontmount Installation



Beware of similar products

All brand and product names are registered trademarks, trademarks or service marks of their respective holders.

SPECIFICATIONS SUBJECT TO CHANGE WITHOUT NOTICE

FURUNO ELECTRIC CO., LTD.
 Nishinomiya, Hyogo, Japan
www.furuno.com
FURUNO U.S.A., INC.
 Camas, Washington, U.S.A.
www.furunousa.com
FURUNO (UK) LIMITED
 Havant, Hampshire, U.K.
www.furuno.co.uk
FURUNO FRANCE S.A.S.
 Bordeaux-Mérignac, France
www.furuno.fr

FURUNO ITALIA S.R.L.
 Gatteo Mare, Italy
www.furuno.it
FURUNO ESPAÑA S.A.
 Madrid, Spain
www.furuno.es
FURUNO DANMARK A/S
 Hvidovre, Denmark
www.furuno.dk
FURUNO NORGE A/S
 Ålesund, Norway
www.furuno.no

FURUNO SVERIGE AB
 Västra Frölunda, Sweden
www.furuno.se
FURUNO FINLAND OY
 Espoo, Finland
www.furuno.fi
FURUNO POLSKA Sp. z o.o.
 Gdynia, Poland
www.furuno.pl
FURUNO EURUS LLC
 St. Petersburg, Russian Federation
www.furuno.com.ru

RICO (PTE) LTD
 Singapore
www.rico.com.sg
FURUNO DEUTSCHLAND GmbH
 Rellingen, Germany
www.furuno.de
FURUNO HELLAS S.A.
 Piraeus, Greece
www.furuno.gr
FURUNO (CYPRUS) LTD
 Limassol, Cyprus
www.furuno.com.cy

FURUNO SHANGHAI CO., LTD.
 Shanghai, China
www.furuno.com/cn

15015SK Printed in Japan
 Catalogue No. M-1560